

RECYCLED WAX

Recycled wax is an economical way to make candles. The colors are uniform and consistant and generally come in deep, muted tones, but can change with each shipment. Melting instructions are included with each 1lb block.



— NEVER LEAVE BURNING CANDLES UNATTENDED —

- Approximate melting point is 115° - 154° F.
- Use a variety of containers; glass, milk cartons, paper cups, or professional molds.
- This wax already has fragrance added. It is NOT recommended to add more fragrance.
- Mixing with other waxes is also NOT recommended.
- Keep wick trimmed to 1/8” above candle surface for best burning results.
- Use for Candle Making, Ski/Snowboard Wax, Art Projects, or Reducing Friction.

Available colors: Forest Green, Cream, Cranberry, Light Gray, Pumpkin, Blue, Red.

When you buy ...	1-9 @	10-24 @	25+ @
RW (1lb blocks)	\$2.50.....	\$2.25.....	\$2.00

Wax prices are subject to change with oil prices in the world market.
Please call for current prices.



BEESWAX

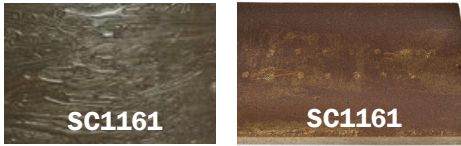
Sheets: Each sheet measures 8” x 17” with a honeycomb pattern. See our website for the 13 colors that we carry - mix colors for quantity price breaks!

When you buy ...	1-9 @	10-99 @	100+ @
BXA.....	\$3.90.....	\$3.50.....	\$3.15

Pellets & Cakes: The color of natural beeswax varies. Beeswax melts at 143°F to 149°F and has a distinctive honey odor. Our cakes and blocks have been filtered.

When you buy ...	1-4 lbs @	5-9 lbs @	10+ lbs @
BX or BXW	\$15.95	\$14.35	\$12.76
BXC..... 2oz cake.....	\$2.50 ea		

MICROCRYSTALLINE WAX



Brown Mycrocrystalline is the most common all-purpose wax favored by most sculptors. It has extremely small crystals, is very pliable and clean burning, with low surface stickiness. Also referred to as “amorphous wax”, the molecular structure consists of a complex mixture of hydrocarbons that include normal paraffins, branched paraffins, monocyclic compounds, & polycyclic compounds. Holds detail well and exhibits shadows in the work unlike lighter colored waxes. Melts between 165° -175° F. Not suitable for candles, but can soften paraffin by using no more than 10% microcrystalline wax.

PLEASE NOTE: color can vary from caramel to a deep brown (see color variation above). Our vendor sends us what they have - with no option to special order a specific color for you.

SC1161Q 2½ lb brick	\$19.00 ea
SC1161.....(11 lb slab) 1-5 @	\$63.00 ea
(66 lb case) 6 slabs @	\$340.20

AQUAVAR

Aquavar, a water-based resinous plastic, is a versatile paint product for art and craft use. Use it as an adhesive or for watercolor, gouache, posters, gesso, acrylics, collage, paper mache, decal transfer, unfired pottery glaze, and more.

- Bonds sand, rock, wood or metal to canvas or any porous surface. For tissue paper collage or paper mache, thin Aquavar about 50% with water.
- Make your own acrylic paints, any color: Add a few drops of liquid household detergent to full-strength Aquavar. Mix this liquid into dry tempera paint with a flat knife or the back of a spoon.
- See our free instruction sheet on how to use Aquavar for an unfired, crystal clear, oven-cured protective glaze.
- Aquavar seals and protects your projects made of plaster gauze, paper mache, and other porous materials.

Go to georgies.com/aquavar for more information.

AQUAP	Pint.....	\$6.95
AQUAG	Gallon.....	\$33.95
AQUAB	Instructions	Free!

WAX DYE CHIPS

Each 10 piece package costs \$1.70 each. (Assortment bag varies and is not represented by the color image L111.)
Use 1-7 chips per 500 gms of wax ... using more will affect the burn of your candle wick.



L111..... Asscorted colors	L111N Avocado	L112H Gray	L112T..... Hunter Green
L111A..... Black	L111P Christmas Green	L112I..... Lime Green	L112U Maize
L111B Blue	L111S Ivory	L112J Maple	L112V Ruby Red
L111C Brown	L111T..... Lavender	L112K Mauve	L112W ... Sage Green
L111D Gold	L111V Apricot	L112L..... Orchid	L112X..... Magenta
L111F..... Orange	L111X..... Aquamarine	L112M ... Peach	L112Y..... Saturn Yellow
L111G Fuchsia	L111Z..... Bayberry	L112N Salmon Pink	L112Z..... Shocking Pink
L111H Purple	L112..... White	L112O Sky Blue	L113A..... Mahogany
L111J Red	L112B Burgandy	L112P Teal	L113B Melon
L111K Turquoise	L112C Butterscotch	L112Q Pale Pink	L113C Navy
L111L..... Yellow	L112D Cerise	L112R Rust	L113D Sand
L111M ... Cranberry	L112F..... Colonial Blue	L112S Cinnamon	L113E Smoke

SCENTS FOR WAX AND SOAPS

Each 1oz bottle costs \$4.45 each. Add 1-2oz per 16oz of Wax. **Add your scent first**, then the dye chip(s) to prevent color changes.

CS51Baby Powder	CS52Fresh Linen	CS23Pina Colada
CS24Banana Blast	CS37Gardenia	CS32Pineapple
CS44Brandied Pear	CS10Glacier Mist	CS55Pumpkin Pie
CS58Cedarwood Amber	CS19HazelNut Cappuccino	CS41.....Rain Forest Orchid
CS71.....Cherry Blossom	CS38Hollyberry	CS33Raspberry Sparkle
CS15Chocolate Craving	CS26Honey Dew Melon	CS34Red Apple
CS16Chocolate Mint	CS64Juniper Jubilee	CS56Relaxation
CS59Christmas Tree	CS70Kiwi Blast	CS42Rose
CS45Cinnamon	CS39Lavender	CS66Sandalwood
CS60Cool Rain	CS40Lilac	CS67Spa Infusion
CS25Cranberry	CS28Mango	CS35Spiced Plum
CS7.....Cranberry Citrus	CS29McIntosh Apple	CS46Strawberry
CS36Dewberry	CS65Ocean Breeze	CS43Sweet Pea
CS68Easter Lily	CS21Orange Dream	CS12Thai Ginger & Lemongrass
CS61Eucalyptus	CS22Peppermint Fizz	CS57Vanilla
CS27Fresh Green Pear	CS9.....Peppermint Vanilla Swirl	CS48Very Berry
		CS49Watermelonw